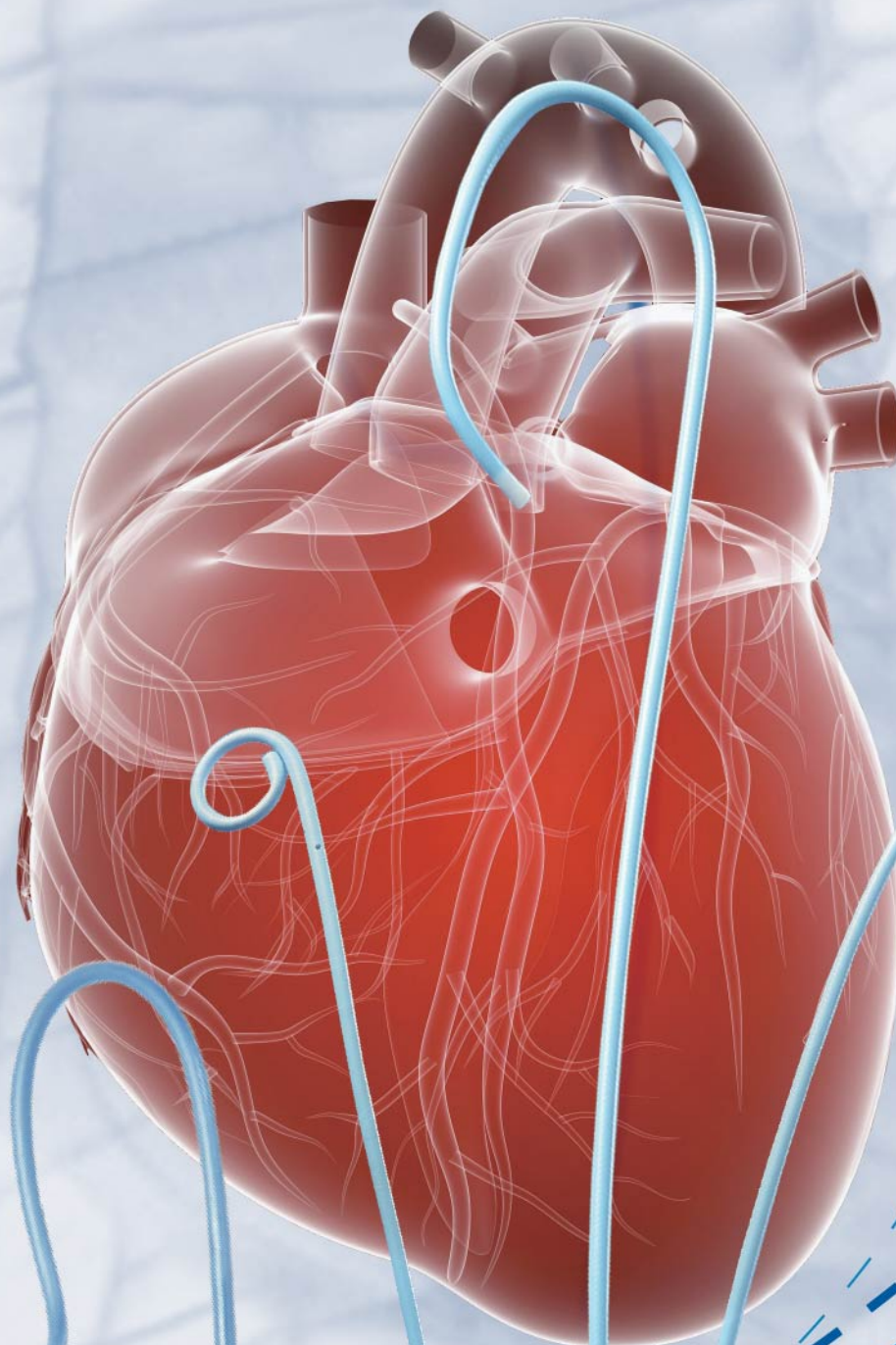


**BIOTEQ®**  
*Improving lives*



**BIOTEQUE CORPORATION**

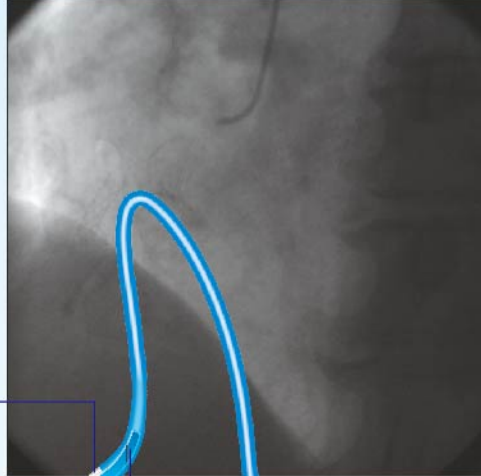
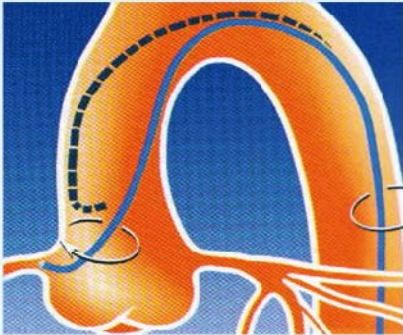
**RUBY-LINE**  
Angiographic Catheter



# The **BIOTEQ**<sup>®</sup> angiographic catheter provides excellent flow rates, optimal contrast medium delivery and vessel opacification.

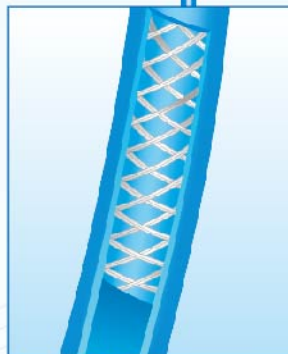
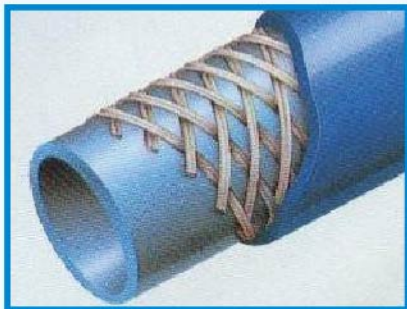
A Judkins Right 4.0 catheter is positioned at the Origin of right coronary artery.

After contrast medium is administered through the catheter.

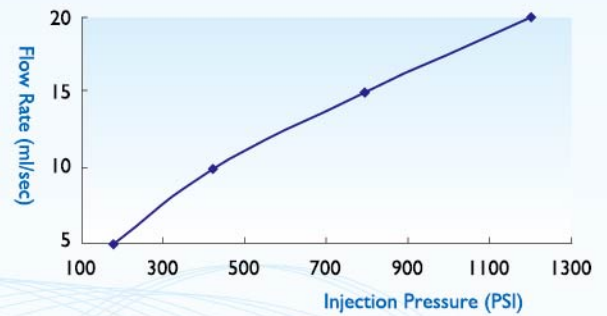


Soft, radiopaque nylon for minimal vessel trauma.

Proximal segment: non-braided nylon for maximum flexibility and shape retention.



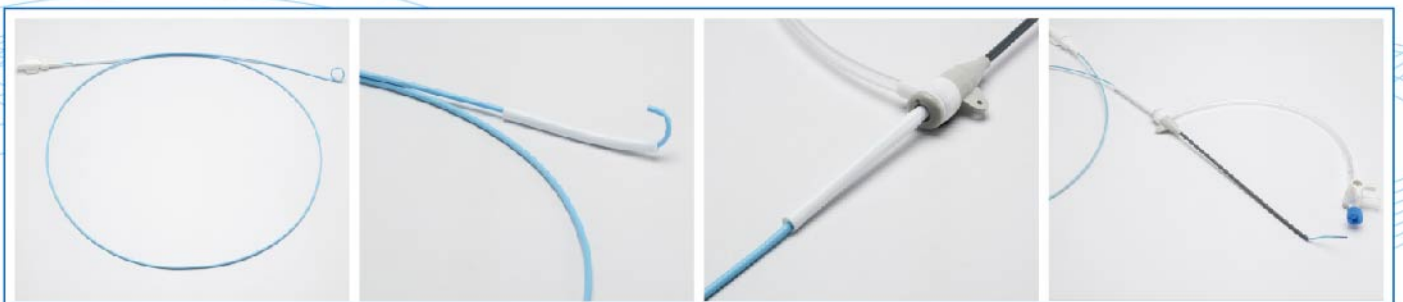
Braided nylon designs are typically used for applications that require high torque (1:1), burst pressure resistance, pushability, steerability and kink resistance (Optimum torque control and kink resistance due to its double mesh).



Large than standard inner diameter allows higher flow rate with less resistance.

Flow rates shown above are determined in vitro using **BIOTEQ**<sup>®</sup> angiographic catheter BT-AC5-JR40, with the Medrad Mark V Plus power injector and contrast medium Optiray 370mg/ml, contrast medium to be warmed to body temperature at 37±2°C prior to power injection, maximum injection pressure is 1200 psi, injection time is 2 secs. Recommended max guidewire at 0.038".

Single use pigtail straightener is supplied with all PIGTAIL angiographic catheters, it can be connected with sheath to facilitate advancing curly PIGTAIL catheter and connected with hub later for strain relief.







## Coronary

Curve Type	Description	French Size	Length (cm)	Side Holes	Product Code
	<b>JR3.5</b>	4	100	-	BT-AC4-JR35
		5	100	-	BT-AC5-JR35
		6	100	-	BT-AC6-JR35
	<b>JR4.0</b>	4	100	-	BT-AC4-JR40
		5	100	-	BT-AC5-JR40
		6	100	-	BT-AC6-JR40
	<b>JR5.0</b>	4	100	-	BT-AC4-JR50
		5	100	-	BT-AC5-JR50
		6	100	-	BT-AC6-JR50
	<b>JL3.5</b>	4	100	-	BT-AC4-JL35
		5	100	-	BT-AC5-JL35
		6	100	-	BT-AC6-JL35
	<b>JL4.0</b>	4	100	-	BT-AC4-JL40
		5	100	-	BT-AC5-JL40
		6	100	-	BT-AC6-JL40
	<b>JL5.0</b>	4	100	-	BT-AC4-JL50
		5	100	-	BT-AC5-JL50
		6	100	-	BT-AC6-JL50
	<b>PIG</b>	4	110	5	BT-AC4-P180
		5	110	5	BT-AC5-P180
		6	110	5	BT-AC6-P180
	<b>PIG 145°</b>	5	110	5	BT-AC5-P145
		6	110	5	BT-AC6-P145
	<b>PIG 155°</b>	5	110	5	BT-AC5-P155
		6	110	5	BT-AC6-P155
	<b>AR1</b>	4	100	-	BT-AC4-AR1
		5	100	-	BT-AC5-AR1
		6	100	-	BT-AC6-AR1
	<b>AR2</b>	4	100	-	BT-AC4-AR2
		5	100	-	BT-AC5-AR2
		6	100	-	BT-AC6-AR2
	<b>AR3</b>	4	100	-	BT-AC4-AR3
		5	100	-	BT-AC5-AR3
		6	100	-	BT-AC6-AR3
	<b>AL1</b>	4	100	-	BT-AC4-AL1
		5	100	-	BT-AC5-AL1
		6	100	-	BT-AC6-AL1

Curve Type	Description	French Size	Length (cm)	Side Holes	Product Code
	<b>AL2</b>	4	100	-	BT-AC4-AL2
		5	100	-	BT-AC5-AL2
		6	100	-	BT-AC6-AL2
	<b>AL3</b>	4	100	-	BT-AC4-AL3
		5	100	-	BT-AC5-AL3
		6	100	-	BT-AC6-AL3
	<b>MPA1</b>	4	100	-	BT-AC4-MPA1
		5	100	-	BT-AC5-MPA1
		6	100	-	BT-AC6-MPA1
	<b>MPA2</b>	5	100	2	BT-AC5-MPA2
		6	100	2	BT-AC6-MPA2
		4	100	-	BT-AC4-MPB1
	<b>MPB1</b>	5	100	-	BT-AC5-MPB1
		6	100	-	BT-AC6-MPB1
	<b>MPB2</b>	5	100	2	BT-AC5-MPB2
		6	100	2	BT-AC6-MPB2
	<b>IMA</b>	4	100	-	BT-AC4-IMA
		5	100	-	BT-AC5-IMA
	<b>TIGER1</b>	6	100	-	BT-AC6-IMA
		4	100	1	BT-AC4-TIG1
	<b>TWIST</b>	5	100	1	BT-AC5-TIG1
		6	100	1	BT-AC6-TIG1
	<b>3DRC</b>	4	100	-	BT-AC4-TWIST
		5	100	-	BT-AC5-TWIST
		6	100	-	BT-AC6-TWIST
	<b>SON1</b>	4	100	-	BT-AC4-3DRC
		5	100	-	BT-AC5-3DRC
		6	100	-	BT-AC6-3DRC
	<b>SON2</b>	4	100	2	BT-AC4-SON1
		5	100	2	BT-AC5-SON1
		6	100	2	BT-AC6-SON1
	<b>IMA</b>	4	100	2	BT-AC4-SON2
		5	100	2	BT-AC5-SON2
		6	100	2	BT-AC6-SON2
	<b>IMA</b>	4	100	-	BT-AC4-IMA
		5	100	-	BT-AC5-IMA
		6	100	-	BT-AC6-IMA

\* Customized Multipack Angiographic Catheters Sets are Applicable.



## Cerebral

Curve Type	Description	French Size	Length (cm)	Side Holes	Product Code
	SIM1	4	100	-	BT-AC4-SIM1
		5	100	-	BT-AC5-SIM1
	SIM2	4	100	-	BT-AC4-SIM2
		5	100	-	BT-AC5-SIM2
	SIM3	4	100	-	BT-AC4-SIM3
		5	100	-	BT-AC5-SIM3
	JB1	4	100	-	BT-AC4-JB1
		5	100	-	BT-AC5-JB1
	JB2	4	100	-	BT-AC4-JB2
		5	100	-	BT-AC5-JB2
	H1	4	100	-	BT-AC4-H1
		5	100	-	BT-AC5-H1
	BERENSTEIN	4	100	-	BT-AC4-BRST
		5	100	-	BT-AC5-BRST
	VERTEBRAL	4	100	-	BT-AC4-VTB
		5	100	-	BT-AC5-VTB

## Visceral

Curve Type	Description	French Size	Length (cm)	Side Holes	Product Code
	RC1	4	80	-	BT-AC4-RC1
		5	80	-	BT-AC5-RC1
	RC2	4	80	-	BT-AC4-RC2
		5	80	-	BT-AC5-RC2
	C1	4	80	-	BT-AC4-C1
		5	80	-	BT-AC5-C1
	C2	4	80	-	BT-AC4-C2
		5	80	-	BT-AC5-C2
	C3	4	80	-	BT-AC4-C3
		5	80	-	BT-AC5-C3
	RH	4	80	-	BT-AC4-RH
		5	80	-	BT-AC5-RH
	PIG	4	65	5	BT-AC4-P180-065
		5	65	5	BT-AC5-P180-065
	PIG	4	110	5	BT-AC4-P180
		5	110	5	BT-AC5-P180

## Visceral

Curve Type	Description	French Size	Length (cm)	Side Holes	Product Code
	PIG	4	65	8	BT-AC4-P180-065-8S
		5	65	8	BT-AC5-P180-065-8S
	PIG	4	110	8	BT-AC4-P180-8S
		5	110	8	BT-AC5-P180-8S
	SHK0.8	4	80	-	BT-AC4-SHK08
		5	80	-	BT-AC5-SHK08
	SHK0.8	4	100	-	BT-AC4-SHK08-100
		5	100	-	BT-AC5-SHK08-100
	SHK1.0	4	80	-	BT-AC4-SHK10
		5	80	-	BT-AC5-SHK10
	SHK1.0	4	100	-	BT-AC4-SHK10-100
		5	100	-	BT-AC5-SHK10-100
	YSR	4	80	-	BT-AC4-YSR
		5	80	-	BT-AC5-YSR
	YSR	4	100	-	BT-AC4-YSR-100
		5	100	-	BT-AC5-YSR-100
	RS	4	80	-	BT-AC4-RS
		5	80	-	BT-AC5-RS
	RS	4	100	-	BT-AC4-RS-100
		5	100	-	BT-AC5-RS-100
	RLG	4	80	-	BT-AC4-RLG
		5	80	-	BT-AC5-RLG
	RLG	4	100	-	BT-AC4-RLG-100
		5	100	-	BT-AC5-RLG-100
	ANCT	4	80	-	BT-AC4-ANCT
		5	80	-	BT-AC5-ANCT
	ANCT	4	100	-	BT-AC4-ANCT-100
		5	100	-	BT-AC5-ANCT-100
	STCT	4	80	-	BT-AC4-STCT
		5	80	-	BT-AC5-STCT
	STCT	4	100	-	BT-AC4-STCT-100
		5	100	-	BT-AC5-STCT-100
	MIK	4	80	-	BT-AC4-MIK
		5	80	-	BT-AC5-MIK

For more information, please contact:  
sales@bioteq.com.tw

**BIOTEQUE CORPORATION**  
5F-6, No. 23, Sec. 1, Chang-An E. Rd.,  
Taipei 104, Taiwan.  
Phone: (886)-2-2571-0269, Fax: (886)-2-2536-1967  
<http://www.bioteq.com.tw>

**ISO 13485, GMP, CE Certified**  
© Bioteque Corp. Oct. 2013  
Brochure number: BT-AC-06