

PRONTO[®] LP

Extraction Catheter

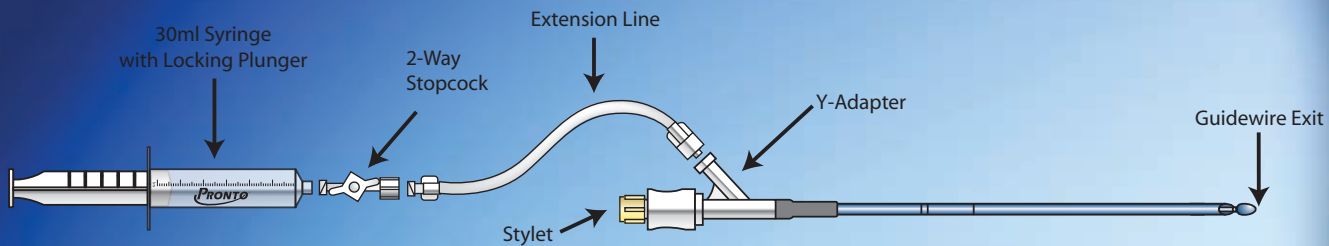
New low-profile option in Pronto thrombus aspiration

- Low 0.053" crossing profile provides access to smaller, distal vessels
- Flexible, kink-resistant distal section allows delivery through tortuous vessels
- Preloaded stylet increases pushability
- Silva tip protects vessel wall during entry and aspiration





20% smaller profile than the Pronto V3 for treatment of more distal vessels

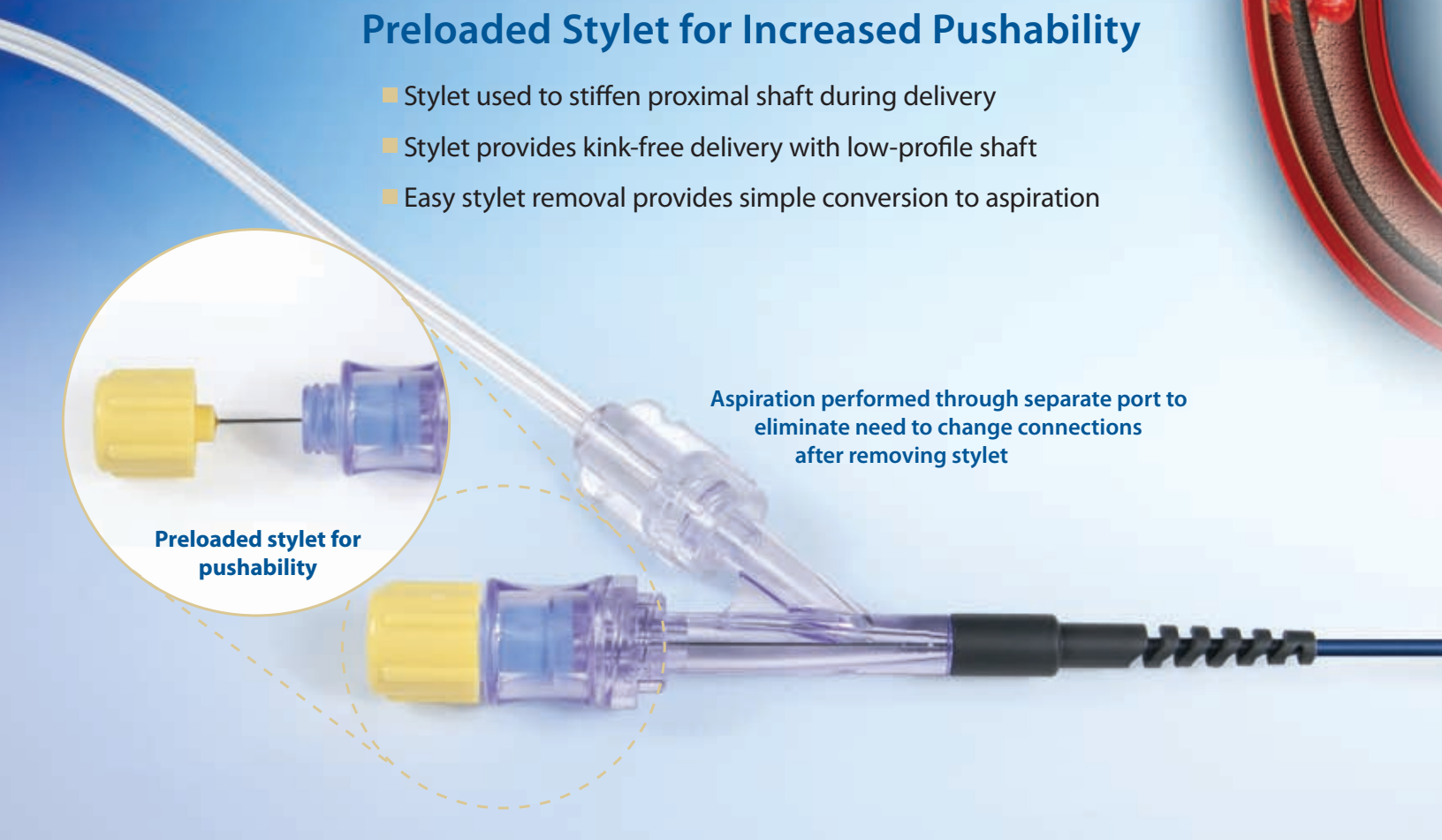


Preloaded Stylet for Increased Pushability

- Stylet used to stiffen proximal shaft during delivery
- Stylet provides kink-free delivery with low-profile shaft
- Easy stylet removal provides simple conversion to aspiration

Aspiration performed through separate port to eliminate need to change connections after removing stylet

Preloaded stylet for pushability

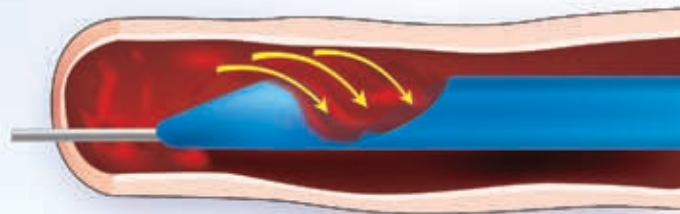


on power of the Pronto in a new **low-profile** design

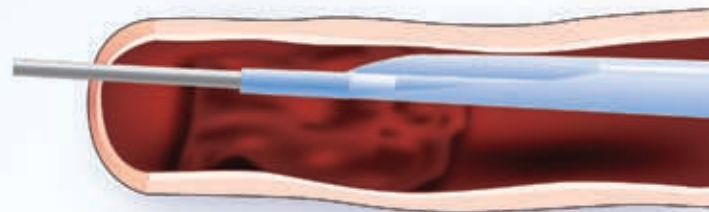
Silva* Tip for Vessel Protection

- Tapered entry profile—designed to improve tracking through tortuous vessels
- Self-centering—designed to extract the thrombus while preventing vessel wall adhesion
- Sloped extraction lumen opening—designed to accommodate larger thrombi

Silva tip of *Pronto LP*



vs. Open-end tip of standard extraction catheter



Advanced Catheter Design

- Low profile—0.053" crossing profile for vessels as small as 1.5mm
- Deliverable—hydrophilic coating for smooth navigation
- User friendly—rapid exchange 140cm catheter with positioning marks at 95cm (single) and 105cm (double)
- Complete—two locking 30ml aspiration syringes included

PRONTO® LP

Extraction Catheter

Model	Description	Box Quantity
5010	Pronto LP Extraction Catheter	1

Pronto LP Specifications

Catheter O.D. (nominal):	0.057"/1.45mm
Crossing profile (nominal):	0.053"/1.35mm
Guide catheter compatibility:	≥6F (0.066"/1.7mm I.D.)
Guidewire compatibility:	≤0.014"/0.36mm
Working length:	140cm
Rapid exchange segment:	20cm
Positioning marks:	95cm = single white mark 105cm = double white mark
Marker band:	~2mm from tip
Syringes:	Two locking 30ml polycarbonate
Filter basket:	70µm

The Pronto LP is indicated for:

- the removal of fresh, soft emboli and thrombi from vessels in the coronary and peripheral system

The Pronto LP is contraindicated in:

- vessels <1.5mm in diameter
- the removal of fibrous, adherent or calcified material (e.g., chronic clot, atherosclerotic plaque)
- the venous system



The Pronto LP is part of Vascular Solutions' line of extraction catheters, including the Pronto V3, Pronto .035" and Pronto-Short catheters.



vascular
SOLUTIONS

Vascular Solutions, Inc.
6464 Sycamore Court
Minneapolis, Minnesota 55369 USA
USA Customer Service: 888.240.6001
www.vascularsolutions.com

CAUTION: Federal Law (U.S.A.) restricts this device to sale by or on the order of a physician. Please see the Pronto LP Instructions for Use for a complete listing of the indications, contraindications, warnings and precautions. U.S. and International patents pending.

Pronto is a registered trademark of Vascular Solutions, Inc.

©2008 Vascular Solutions, Inc. All rights reserved. ML1873 Rev. B 01/08